

LED Replacement Guide

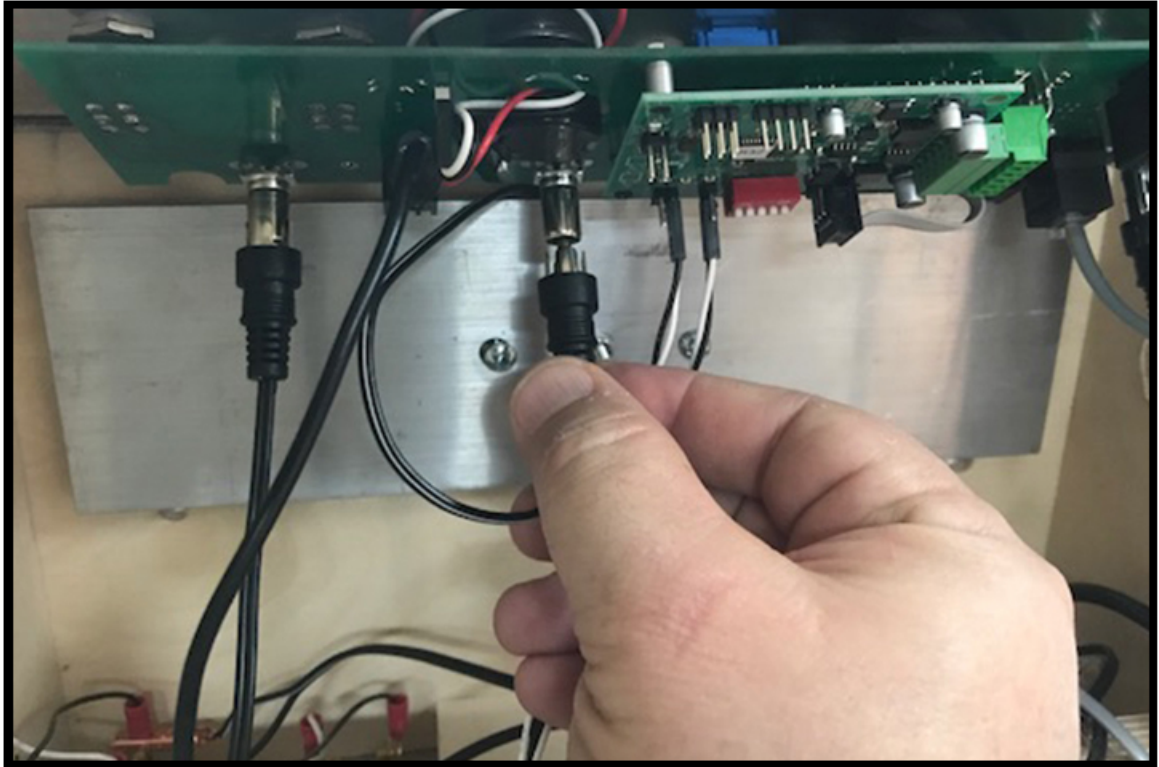


First, remove the camera and any gate that might be on the unit. Then be sure to unplug all cables in the back of the Universal and gently move them aside.

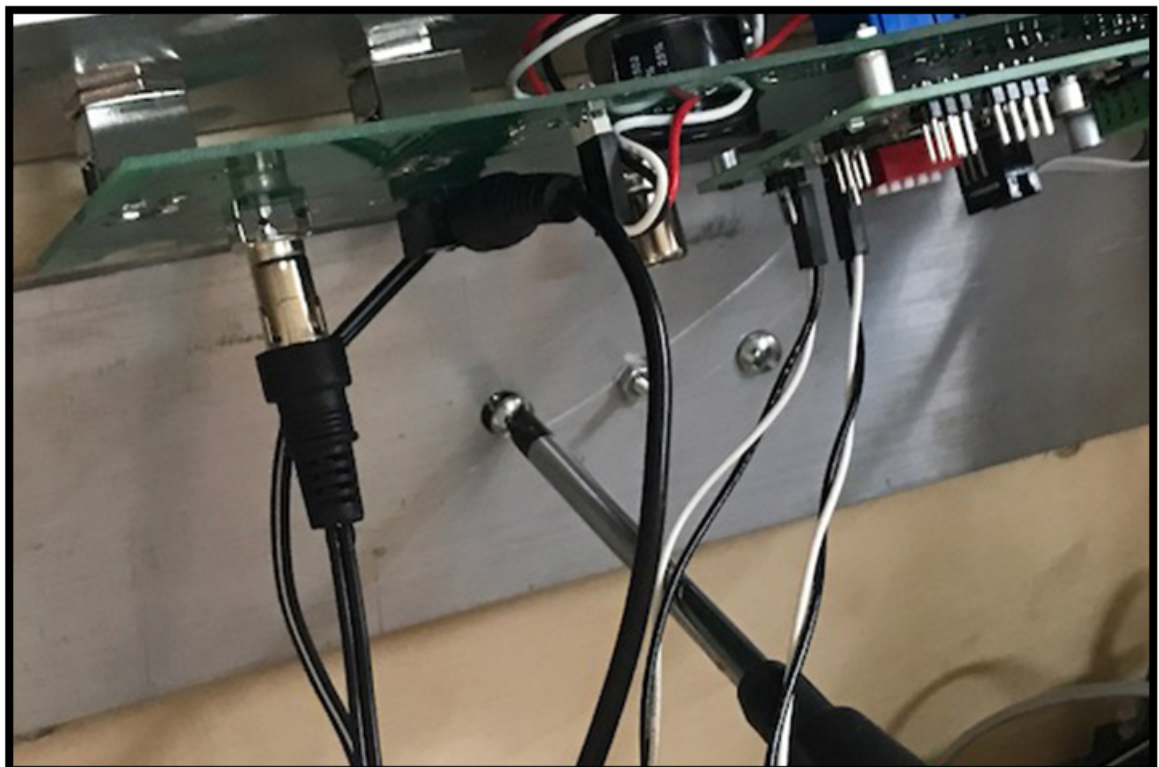


Lay the unit on its back and remove the 4 screws holding the base to the control box. Please note orientation of the rounded front edge of the base.

LED Replacement Guide

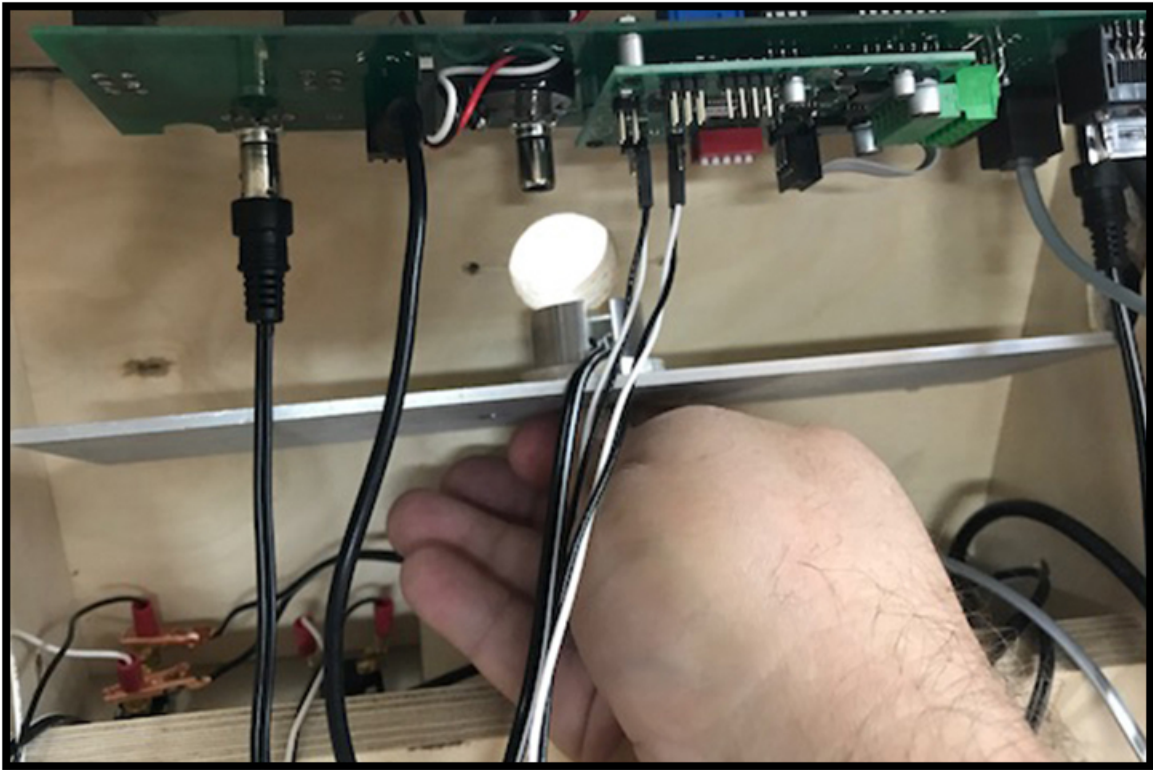


Unplug the connector for the LED assembly.



Use a medium Phillips screw driver and remove both retaining screws.

LED Replacement Guide



Carefully remove the LED assembly from the base. Avoid accidentally unplugging any of the other cables, if possible.

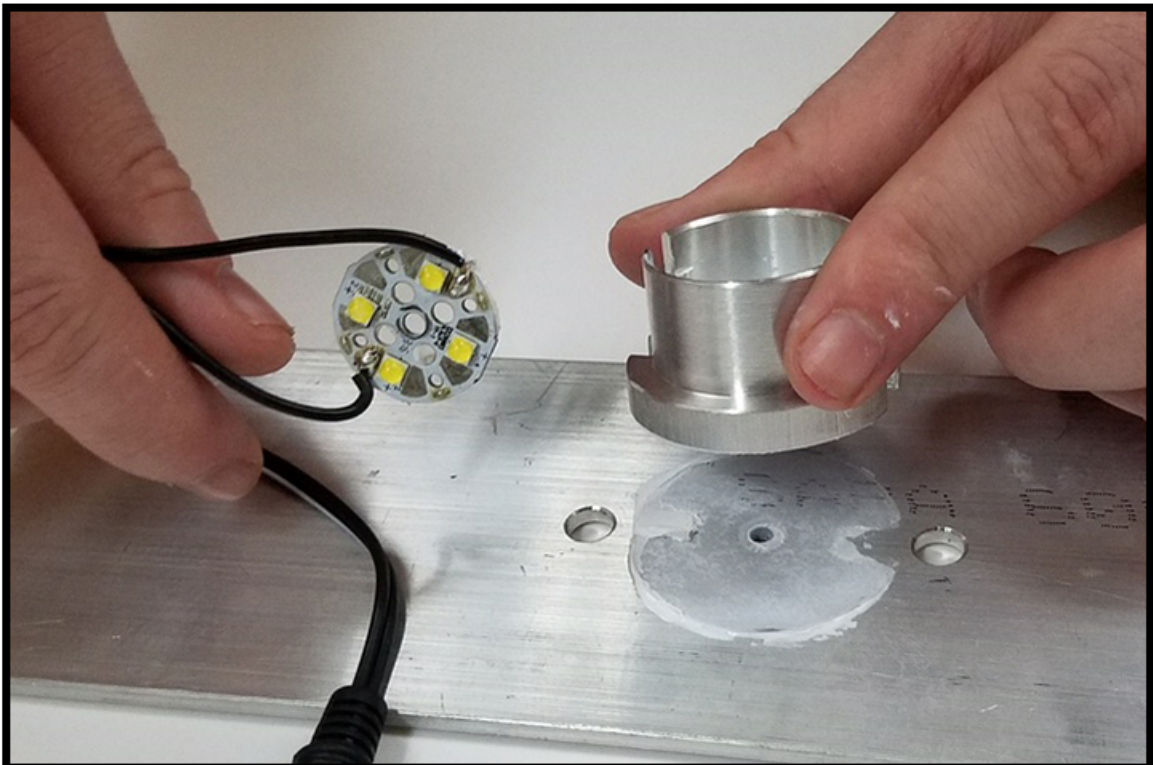


Use a small phillips or flat blade screwdriver and a pair of pliers to remove the center bolt that holds the assembly together.

LED Replacement Guide



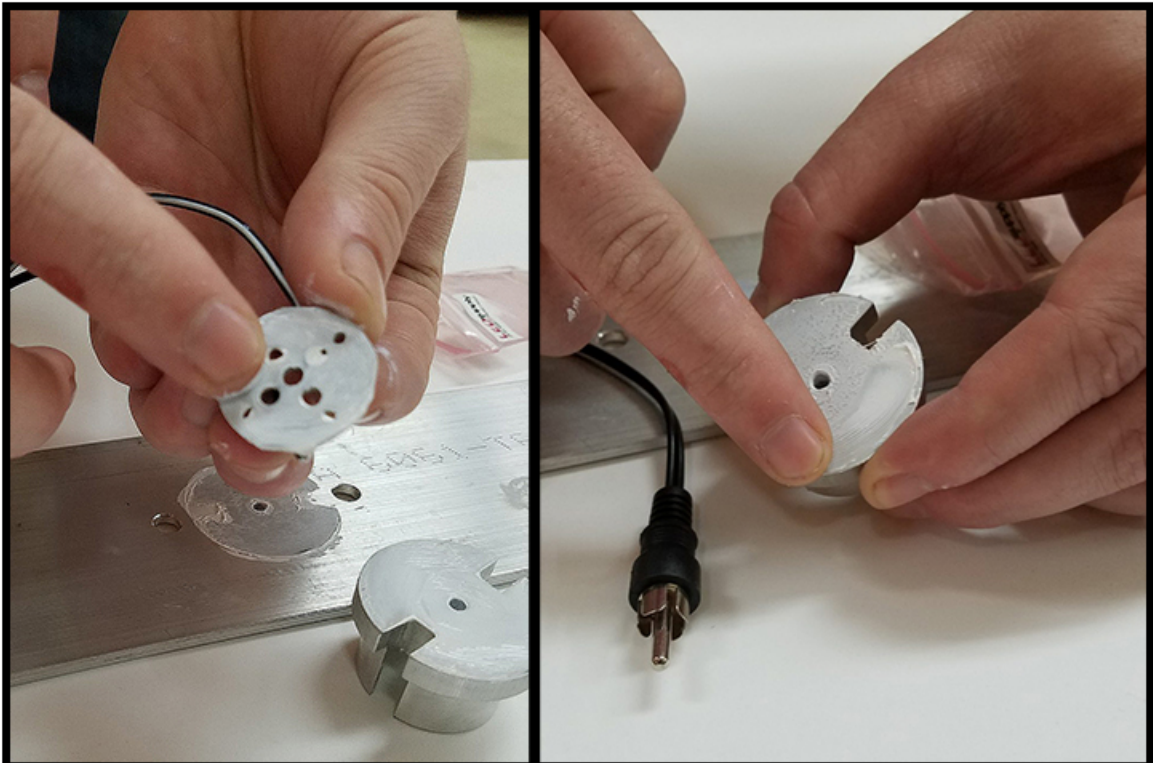
Carefully remove the LED disc and the LED post from the assembly.



LED Replacement Guide

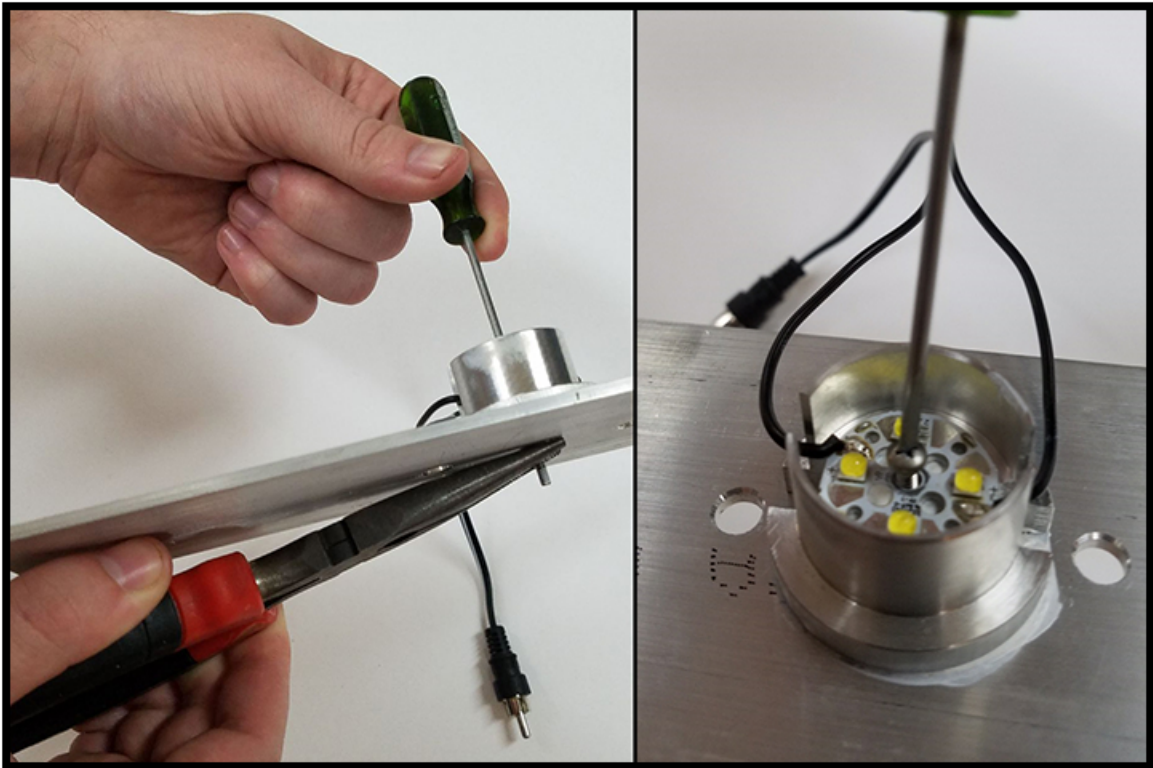


Open the provided bag of thermal paste and, using your finger, apply a thick coating to the back of the LED disc as well as the LED post.

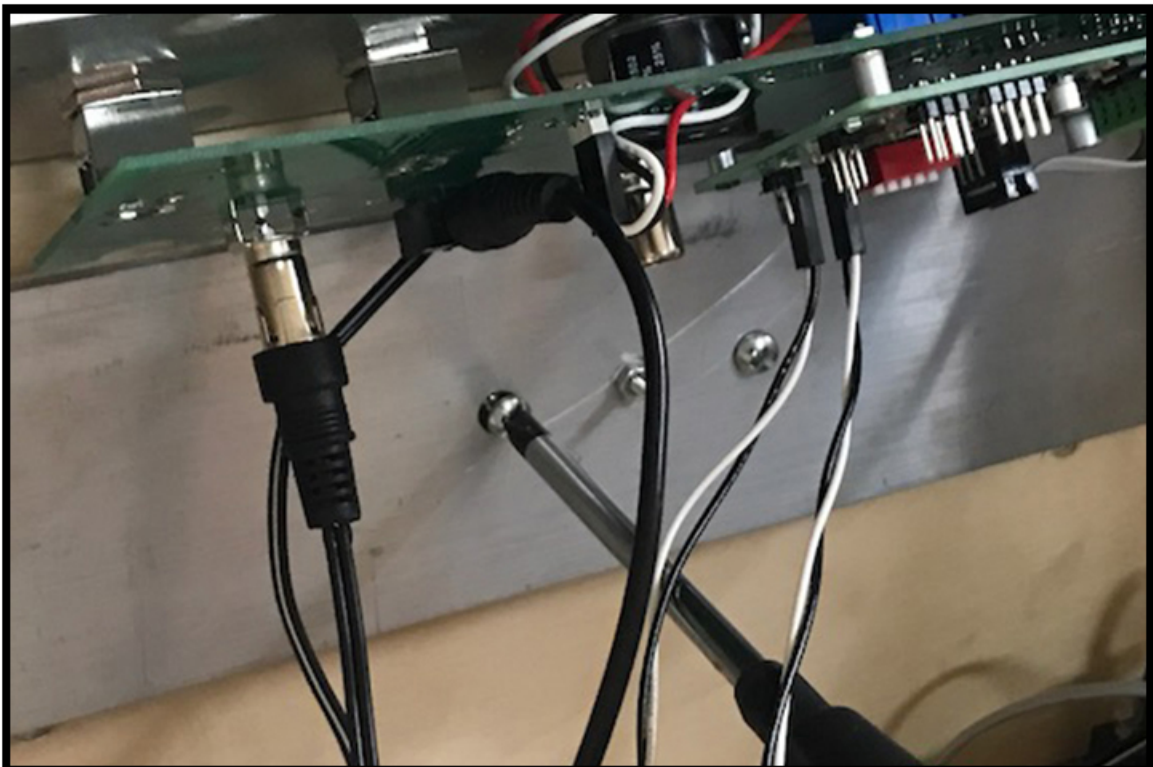


The purpose of the thermal paste is to transfer the heat from the LED down through the LED post to the aluminum plate. So it is important to get an even, thick coating of the paste on both pieces. The paste will wash off your finger easily. 5

LED Replacement Guide

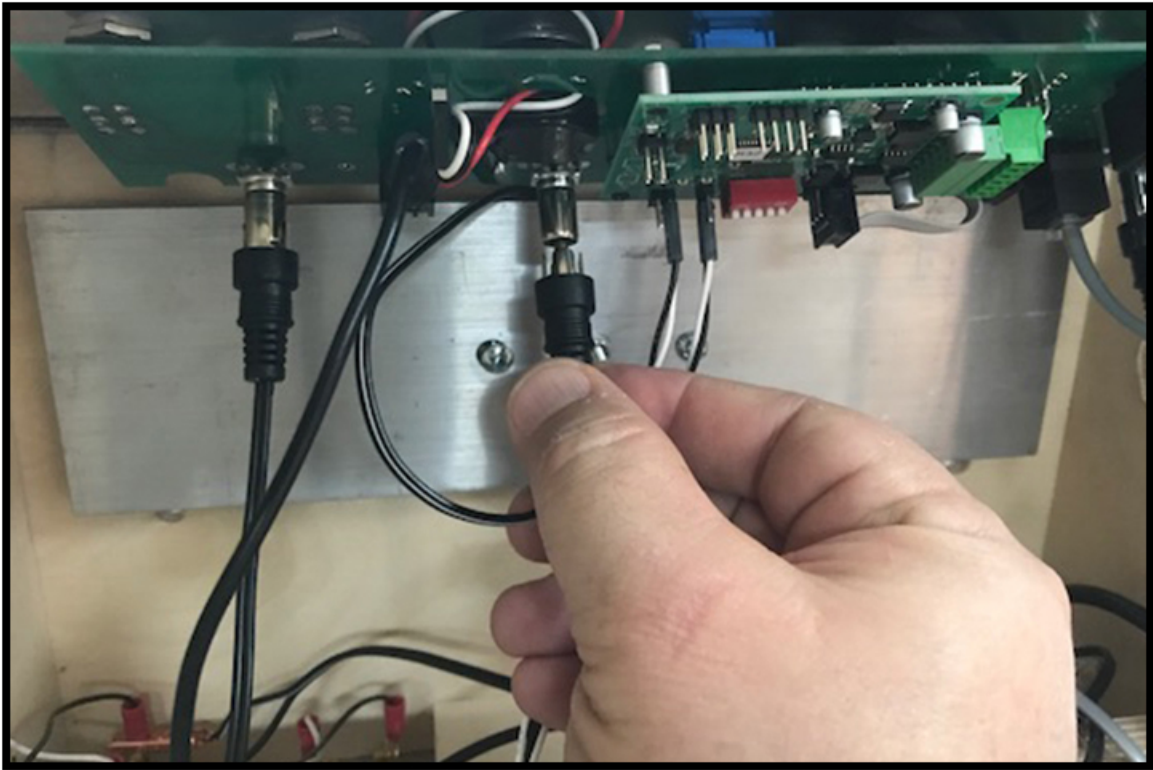


Use a screwdriver and a pair of pliers to tighten the assembly tightly together. If a replacement lock nut is provided, use that in place of the original nut.



Place the finished assembly back in the scanner and secure using the screws.

LED Replacement Guide



Plug the LED assembly into the electronics.



Attach the black plastic bottom to the scanner base and reattach all cords.